

PLEASE NOTE THAT YULELOG 2016 IS ONLY COMPATIBLE WITH WINDOWS 7, 8 AND 10

VISTA AND XP ARE NO LONGER SUPPORTED

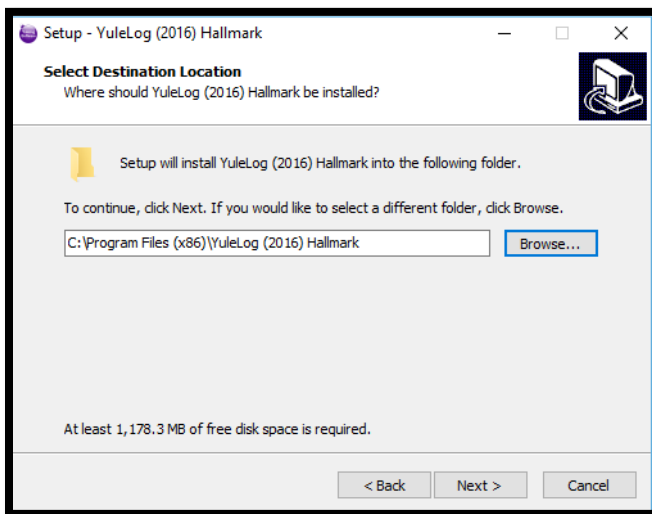
YuleLog 2016 Digital Download - Windows

New Installation Instructions

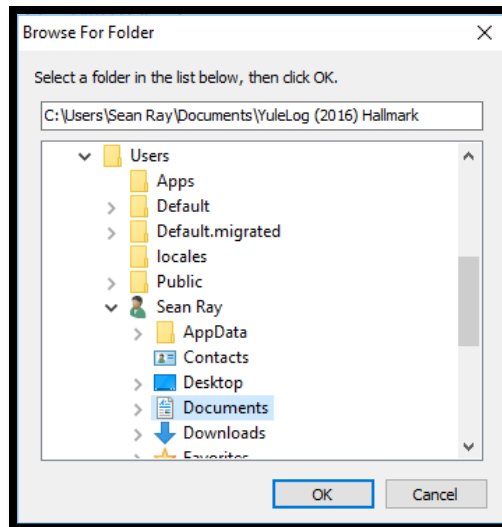
All of the necessary files are included in the YuleLog 2016 Zip folder that you downloaded from Payloadz. To begin installation, right click YuleLog2016Windows.zip and choose "Extract All." Click "Extract" on the box that pops up. After you have extracted the file, click on "setup.exe"

1. Double click on setup.exe
2. **YuleLog must be installed in the Documents folder. Follow this step carefully**
3. **When you get to the screen that asks where you want to install, click on the Browse button**
4. **Select Users**
5. **Double Click on your login name. Double click on Documents. Click continue and this should install YuleLog in your Documents folder.**

Screenshots of the setup screen for reference:



Click browse at this screen



Click Users > Your Name > Documents and Click OK

Starting YuleLog

1. Go to your Documents folder. Double Click on the YuleLog 2016 (Hallmark) folder. Double click on the icon titled YuleLog 2016 (Hallmark). The icon is a purple ornament:



2. You can also start the program by clicking the YuleLog 2016 (Hallmark) shortcut on the desktop if you chose to create one.
3. The first time you run YuleLog, you will see a screen asking if this is a new installation or if you are updating. Click on the button labeled NEW INSTALLATION
4. You will be presented with a form to fill out. This name and address form should be filled out with the information you want to appear on any reports you generate. After completing this form, click on the continue button to get to the opening screen.

Backing up your data is very important! Please visit our help page for information on how: yulelog.com/help.htm